

Contact: Carole Wardell
Phone: 954-465-4910

Email: carole@wardellproducts.com
Website: www.wardellproducts.com

B210 Flutter Mold Bundle

Create a Flutter Rimmed Bowl with a Cookie-Style Cast Foot or a Slump-Drop Foot

Flutter Mold Process Overview

The Flutter Mold Bundle enables glass fusers to create a bowl that is 11 5/8" diameter x 2 5/8" high, with a cookie style foot, in a three-step process (29.5 x 6.7 cm).



Flutter Mold with Foot Casting Mold



Strung-Out Bowl showing Cast Foot

Note: The fusing kiln chamber must be minimum 13" dia by 6" deep (33 x 15 cm).

1. The first step is to cast a glass foot disk using the C105 foot casting mold and 4.6 oz (130 g) of scrap-glass shards.
2. Then design and fuse a 12" (30.5 cm) diameter flat design disk. This could be a single glass layer disk with fused design elements on it or it could be a two layer, full-fused design disk. Or simply cut a 12" (30.5 cm) circle from a compelling piece of fusible art glass and let the design in the glass and the foot on the bottom be the star.
3. The final step is to slump the design disk into the Flutter Mold to shape the bowl and attach the cast glass foot to the underside in a single firing.

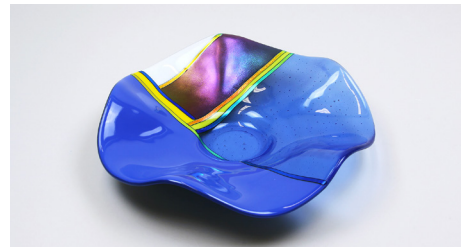
Note: This mold can shape a beautiful bowl without adding the cast glass foot. Simply create the design disk, place it on the S210 mold and follow the slump firing schedule included with the mold. The center of the design disk will slump into the foot cavity in the mold to form a slump-drop foot.

Mold Package Contains:

- S210 Flutter Slump Mold
- C105 Foot-disk Casting Mold
- 4 page Instructional Booklet
- Weblink to download one eProject with Video



Red Swirls Bowl with Cast Foot
11 5/8" x 2 5/8" (29.5 x 6.7 cm)



Patchwork Bowl showing
Slump-drop Foot



Radiant Bowl with Cast Foot
11 5/8" x 2 5/8" (29.5 x 6.7 cm)

The Flutter Mold Bundle is now in Full Distribution